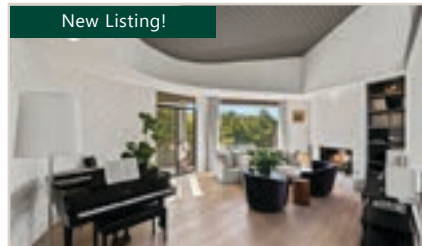


# LAMORINDA'S LEADING INDEPENDENT REAL ESTATE FIRM



New Listing!

## 523 Miner Road, Orinda

5 Bd | 4 Ba | 3945 Sqft | \$4,150,000  
Experience luxury living in this captivating 1971 modern architecture masterpiece, designed by Carmel Architect Bud Evenson and stylishly remodeled in 2015!



## 41 La Noria, Orinda

5 Bd | 4.5 Ba | 4405 Sqft | \$3,795,000  
Top quality 5 bd/ 4 ba home around the corner from OCC w/ an incredible layout & magical spaces indoor & out!



## 417 Moraga Way, Orinda

4 Bd | 2 Ba | 2007 Sqft | \$1,995,000  
Custom home by Dan Bartlett of DB Design Build features, soaring ceilings, wall of multi-sliders & scenic views!



New Listing!

## 33 Rheem Blvd, Orinda

4 Bd | 3 Ba | 2217 Sqft | \$1,995,000  
A special single-story, 4 bed/3 ba, 2112 sf property with a large circular paver driveway and on .73 acre lot right near the walking trail to Glorietta Elementary!



## 3557 Boyer Circle, Lafayette

4 Bd | 3.5 Ba | 3512 Sqft | \$2,995,000  
Gorgeous, fully renovated Downtown Lafayette Home w/ Mt Diablo Views!



## 3235 Mt. Diablo Blvd #104, Lafayette

2 Bd + Office | 2 Ba | 2148 Sqft | \$1,995,000  
Luxury 2 bd + office/ 2 ba single-level condo on a cul-de-sac features hardwood flooring, beamed ceilings, Anderson windows & so much more!



New Listing!

## 1138 Garden Lane, Lafayette

3 Bd | 2 Ba | 1201 Sqft | \$1,450,000  
This updated home offers single level living in a beautiful and serene natural setting with a great yard and views of the hills!



New Price!

## 160 Greenwood Circle, Walnut Creek

3 Bd | 2 Ba | 1472 Sqft | \$1,245,000  
Charming single-level rancher features 3 bd/ 2 ba, two separate living rooms & spacious backyard w/ level lawn!



## 300 N Civic Drive #411, Walnut Creek

1 Bd | 1 Ba | 825 Sqft | \$345,000  
Convenient location close to vibrant downtown with restaurants and shopping, and easy access to freeway and Bart for commute.



New Listing!

## 42 Vivian Drive, Pleasant Hill

3 Bd | 2 Ba | 1558 Sqft | \$1,378,000  
Charming immaculately remodeled and expanded single level (with no steps) ranch style home in Gregory Gardens!



## 2601 College Ave, #309, Berkeley

2+ Bd | 2 Ba | 1084 Sqft | \$875,000  
Conveniently located between Elmwood & UC Berkeley, this light & bright top-floor unit has Bay views!



## 1409 A Spruce Street, Berkeley

1 Bd | 1 Ba | 645 Sqft | \$549,000  
Some of the most well-loved Berkeley amenities are just minutes away, including UC Berkeley, Chez Panisse, the Rose Garden, Live Oak Park, Peet's Coffee and more!

## The Village Associates:

Ashley Battersby • Shannon Conner • Meara Dunsmore • Linda Ehrich • Emily Estrada • Joan Evans • Linda Friedman • Liz Gallagher  
Claudia Gohler • Ari Hatton • Gillian Judge Hogan • Dexter Honens II • Christina Linezo • April Matthews • Hillary Murphy • Karen Murphy  
John Nash • Altie Schmitt • Ann Sharf • Amy Rose Smith • Molly Smith • Jeff Snell • Lynda Snell • Alexis Thompson • Clark Thompson  
Angie Evans Traxinger • Ignacio Vega • Ann Ward • Margaret Zucker

facebook.com/VillageAssociates  
twitter.com/villageassoc  
instagram.com/VillageAssociates

93 Moraga Way, Suite 103 Orinda, CA 94563 • Phone: (925) 254-0505

Visit [www.VillageAssociates.com](http://www.VillageAssociates.com)

DRE# 01301392



It's Village. Of Course.

DRE# 01301392